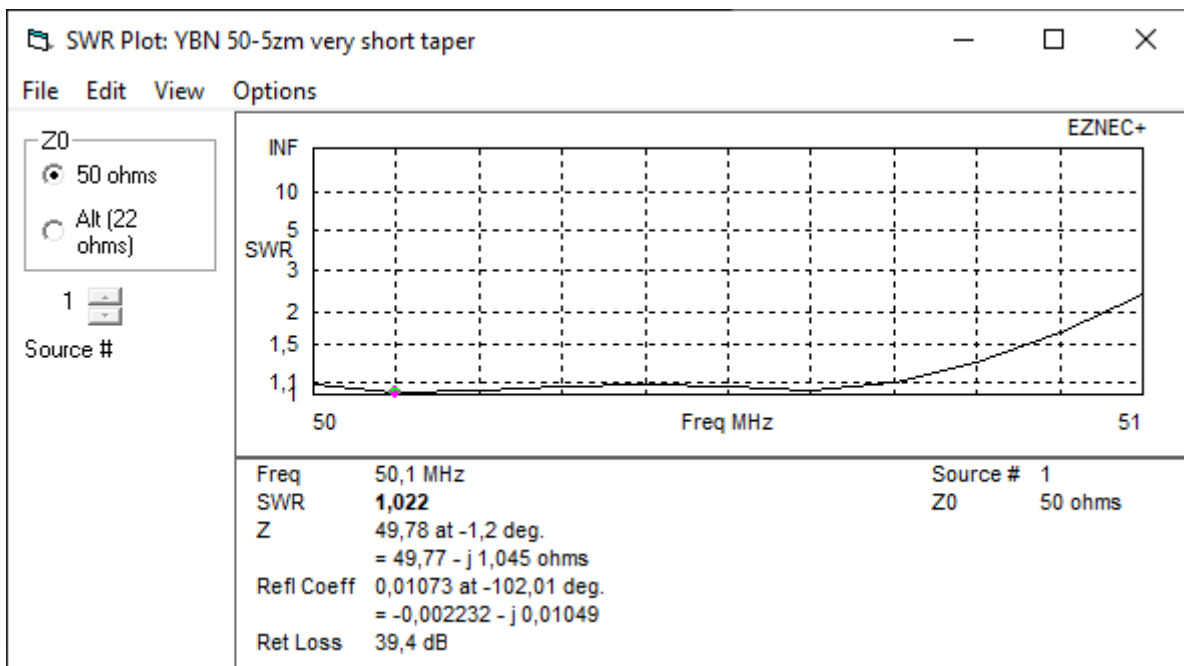
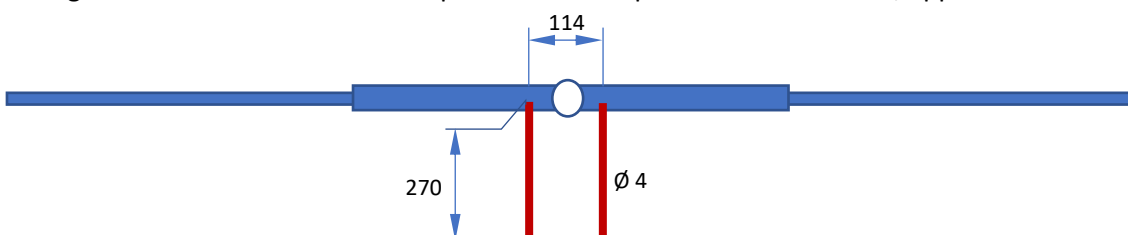


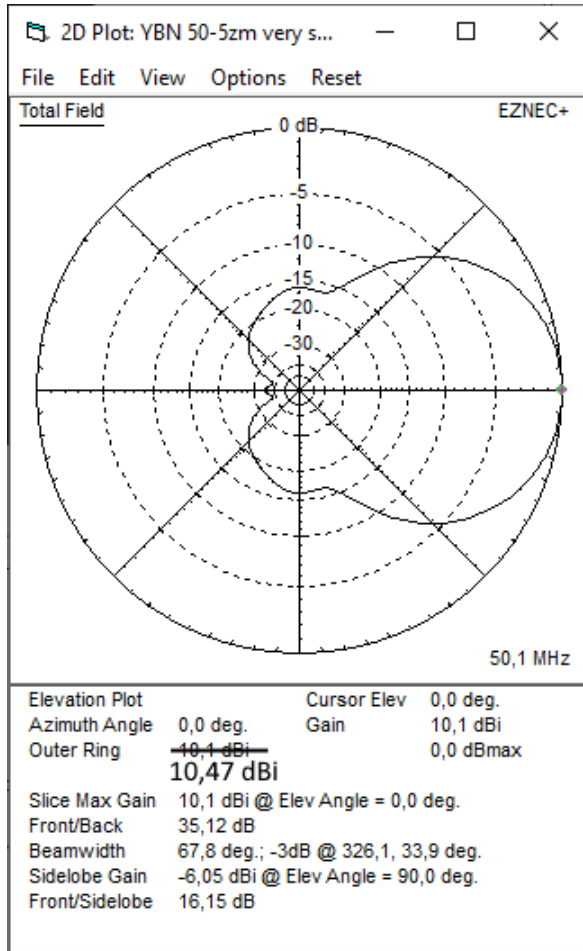
Boom 3950 mm plus 2 x 20 mm offset = 3990 mm mechanically



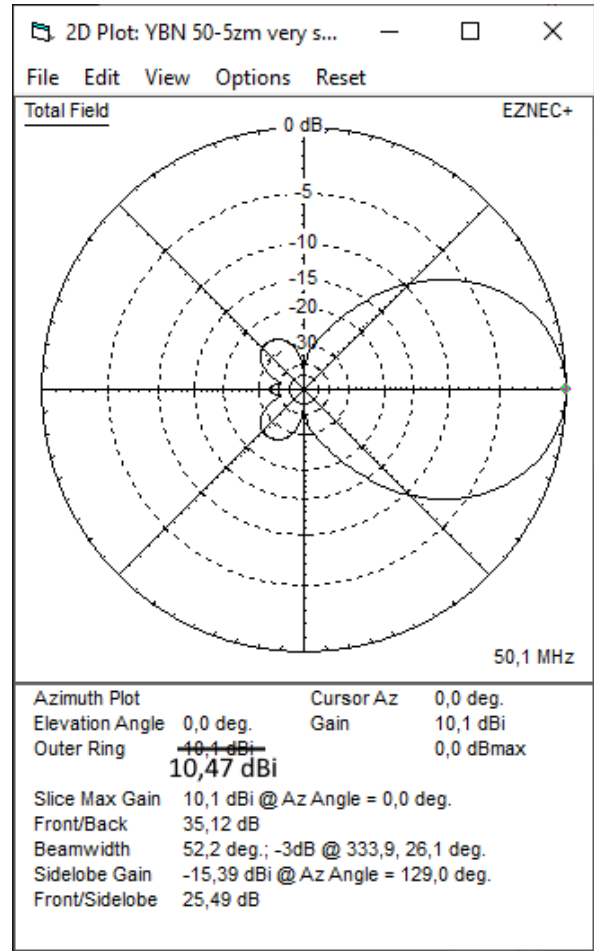
Original Z = 18.1-2.5 ohms at feed point => Hairpin match to 50 ohms, approx. dimensions:



Elevation Pattern



Azimuth Pattern



Boom 3990 mm: In sections of (1290 + 100) + 1400 + (1300 + 100)

	Positions	Element lengths, total
Start of Boom	0	
Refl.	20	1508 x 2 = 3016 mm
DE	650	1439 x 2 = 2878 mm
D1	1267	1424 x 2 = 2848 mm
D2	2480	1395 x 2 = 2790 mm
D3	3970	1340 x 2 = 2680 mm
End of Boom	3990	

Taper scheme for all elements:

Section	∅		Cutting length
Inner	14 mm	950 mm	950 mm
outer	10 mm	Rest + 100 mm overlap	
	Refl.	= 1058 + 100 mm	1158 mm
	DE	= 989 + 100 mm	1089 mm
	D1	= 974 + 100 mm	1074 mm
	D2	= 945 + 100 mm	1045 mm
	D3	= 890 + 100 mm	990 mm

All final element lengths
are subject to boom
correction!

+2 ... 3 mm seems likely